

ESC
GARAGE
& CLUB

ARTIST

Nonotak Studio is an artistic collaboration between French illustrator Noemi Schipfer and Japanese architect and musician Takami Nakamoto, formed in 2011. Known for their immersive light and sound installations, the duo creates ethereal and dreamlike environments that blend visual art and soundscapes. Their work often features minimalistic aesthetics, utilizing light, space, and sound to produce experiences that challenge perceptions and evoke emotional responses.

Nonotak's installations are characterized by their dynamic interplay of light and shadows, often synchronized with ambient and electronic music composed by Nakamoto. This combination creates hypnotic and meditative atmospheres, engaging audiences in multisensory experiences. The duo's background in architecture and illustration informs their meticulous approach to spatial design, while their integration of music and technology highlights their innovative use of multimedia.

Nonotak has exhibited internationally at prominent venues and festivals, including the Sónar Festival in Barcelona, MUTEK in Montreal, and the Mapping Festival in Geneva. Their work has garnered acclaim for its technical precision and artistic depth, solidifying their reputation as pioneers in the field of audiovisual art.

DESCRIPTION

Nonotak's representative work, SIGNALS, has been adapted for Type: ESC, creating a piece that aligns with the space and concept of ESC. Known for their dynamic expressions that combine art, sound, and technology, their work redefines viewers' perceptions of space. To date, Nonotak has created and exhibited works in dialogue with various spaces around the world, including the Tate Modern in the UK, Kiyomizu-dera Temple, Greek temples, and opera houses.

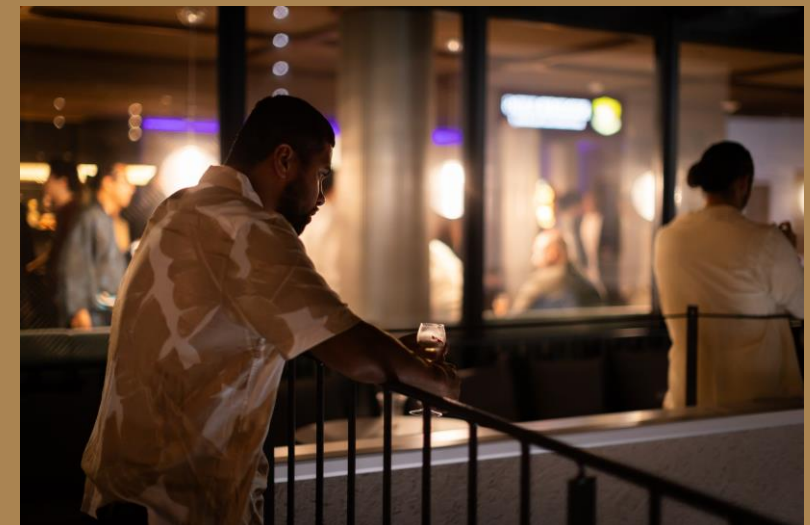
Their innovative pieces, which blend tradition and space with new media, feature movements and light motions set to original sound, evoking a sense of narrative and challenging technological and architectural concepts. The work for ESC focuses on garage and car culture, exploring how to create halation when cars and people enter the ESC Gallery space.

This immersive piece allows participants to enter the work, where the interplay of light motions and sound, despite its simple structure, dynamically immerses viewers into the world of Nonotak.

At night, the front blackout curtains are removed, allowing the work to be viewed from outside. The way the building itself moves like a lightbox changes the impressions and experiences within, enabling viewers to enjoy Nonotak's work from the perspective of the city space.

ESC GARAGE & CLUB

ESC GARAGE & CLUB is a one-of-a-kind membership club where innovative and forward-thinking individuals gather under one roof, featuring a garage, lounge, bar, sauna, and premium car-sharing service. ESC Garage & Club aims to become a unique membership club that creates new culture and status, driven by like-minded individuals.

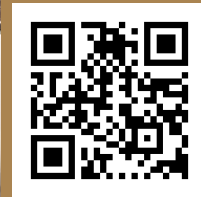


ESC GARAGE & CLUB

Jazz Live with Akiko



Porsche 911 classic car event with Mr. Jun Nishikawa supported by Octane



Textile Nishijin HOSOO

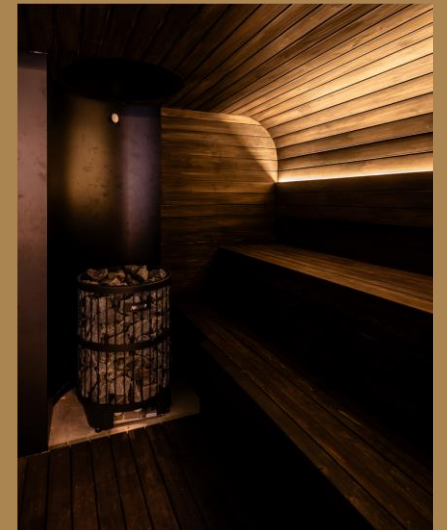
TRADMAN'S BONSAI



Kinder Kids × ESC Gallery



ESC Lounge / The Sauna for ESC CLUB MEMBER



MEMBERSHIP ONLY AREA